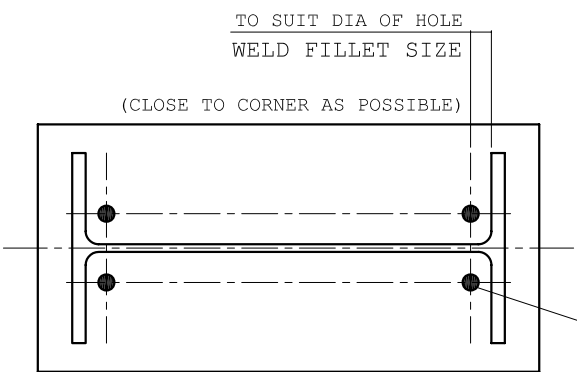


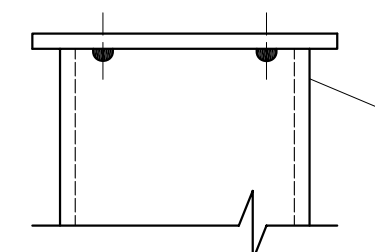
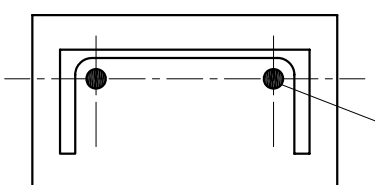
REVISIONS				
ZONE	REV	DESCRIPTION	DATE	APPROVED
	0	ISSUED FOR CONSTRUCTION	27/02/06	

14 DIA FOR 310UB & 150UC
18 DIA FOR 360UB & 200UC & ABOVE

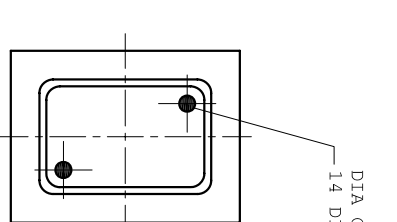
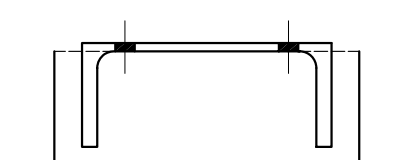
14 DIA UP TO 180 PFC
18 DIA FOR 200 PFC & ABOVE



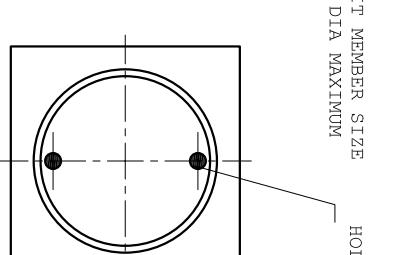
TYP BEAM
END PLATE AND BASEPLATE



TYP CHANNEL
END PLATE AND BASEPLATE



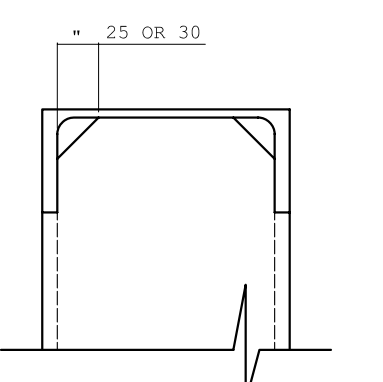
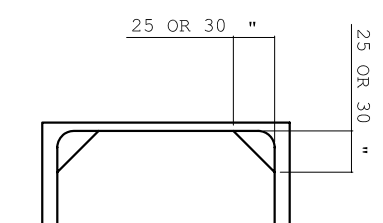
TYP PIPE & RHS
BASEPLATE



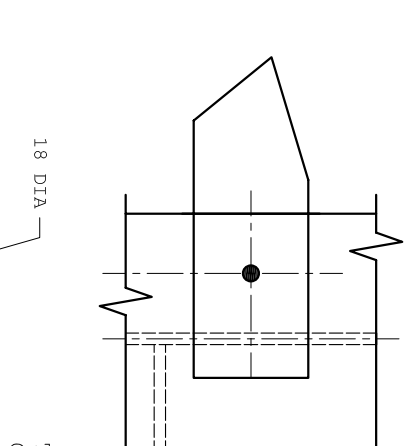
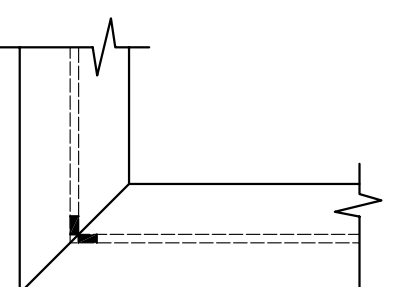
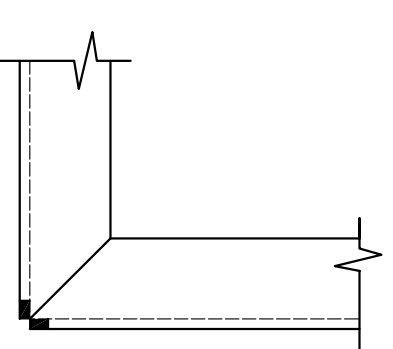
TYPICAL BASEPLATE
TO COLUMN STIFFENER

DIA OF HOLE TO SUIT MEMBER SIZE
14 DIA MINIMUM 30 DIA MAXIMUM

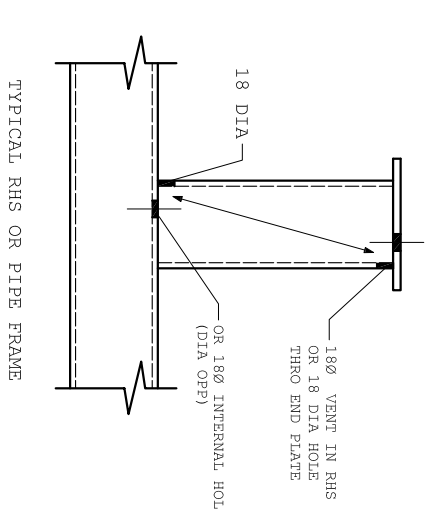
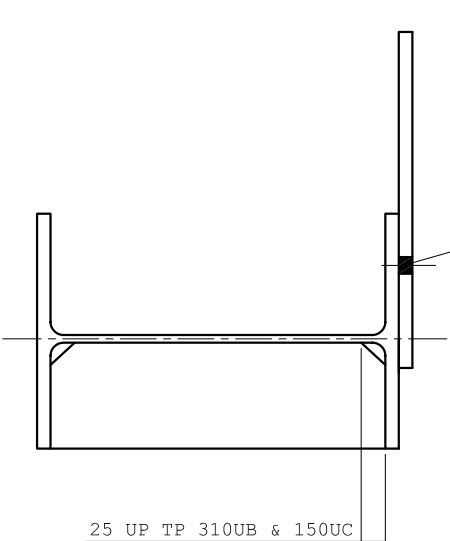
HOLE DIA = 16 mm FOR CHS < 89
24 mm FOR CHS > 168
30 mm FOR CHS > 324
50 mm MIN FOR CHS > 324



TYPICAL FOR ANGLE UB, UC & PFC
- 25 FOR 75 FLANGE AND UNDER
30 FOR 90 FLANGE AND OVER

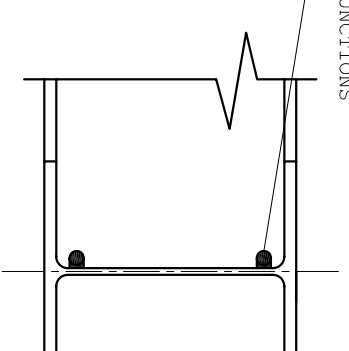
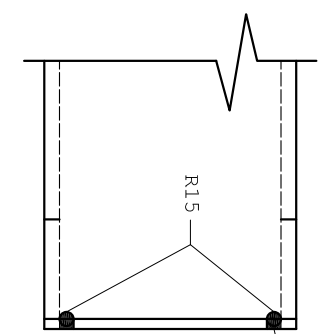


TYPICAL FOR
CLEAT TO FLANGE



HOLE DIA = 16 mm FOR CHS < 88.9
= 30 mm FOR CHS > 219.1
= 22 mm OTHERWISE

R15 "MOUSE HOLES" TO BE
AT BOTH FLANGE / WEB JUNCTIONS



galvanizers
ASSOCIATION OF AUSTRALIA

HARTWAY
GALVANIZERS

VENTING REQUIREMENTS
FOR HOT DIP GALVANIZING
DETAILS

DRAWN BY: KH	SHEET	SCALE	REV 0
--------------	-------	-------	-------